



O'HARA
PROPERTIES & ESTATES

WHITSTABLE ROAD | PORTSMOUTH | PO63JR

£270,000



GET SOCIAL

Follow us on social media
to be the first to see new
property listing, marketing
updates and more.



OHARA PROPERTIES AND ESTATES
69-71 London Road
Waterlooville Hampshire
PO7 7EX
Company Registration Number: 13624992

WWW.OHARAPROPERTIESANDESTATES.CO.UK

ENQUIRIES@OHARAPROPERTIES.CO.UK

02392 259822

WWW.OHARAPROPERTIESANDESTATES.CO.UK

02392 259822 | ENQUIRIES@OHARAPROPERTIES.CO.UK



WELCOME *Home*

Nestled on the charming Whitstable Road in Cosham, Portsmouth, this delightful end terrace house offers a perfect blend of comfort and convenience. Built in 1960, the property boasts a warm and inviting atmosphere, ideal for families or those seeking a peaceful retreat.

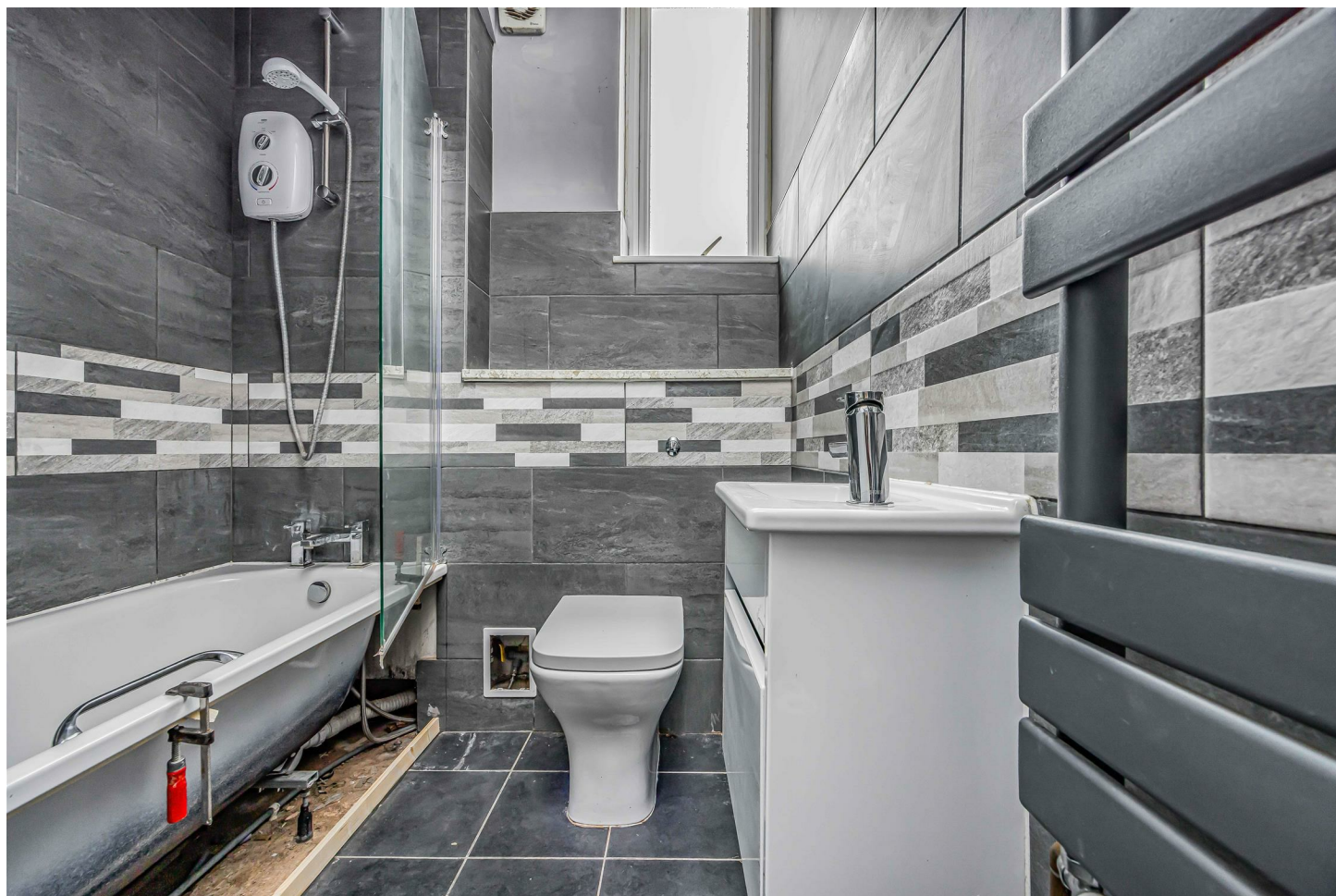
Upon entering, you will find a spacious reception room that serves as the heart of the home, providing an excellent space for relaxation and entertaining guests. The room is filled with natural light, creating a welcoming environment for family gatherings or quiet evenings in.

The house features three well-proportioned bedrooms, each offering a tranquil space for rest and rejuvenation. These rooms are versatile and can easily accommodate various furniture arrangements, making them suitable for both adults and children alike.

The property includes a bathroom that is functional and well-maintained, ensuring that daily routines are both comfortable and efficient.

Situated in a desirable location, this home benefits from easy access to local amenities, schools, and transport links, making it an ideal choice for those who value convenience. The surrounding area is known for its friendly community and vibrant atmosphere, providing a wonderful backdrop for family life.

In summary, this end terrace house on Whitstable Road presents an excellent opportunity for anyone looking to settle in the Cosham area. With its spacious living areas, three bedrooms, and convenient location, it is a property that truly deserves your attention.

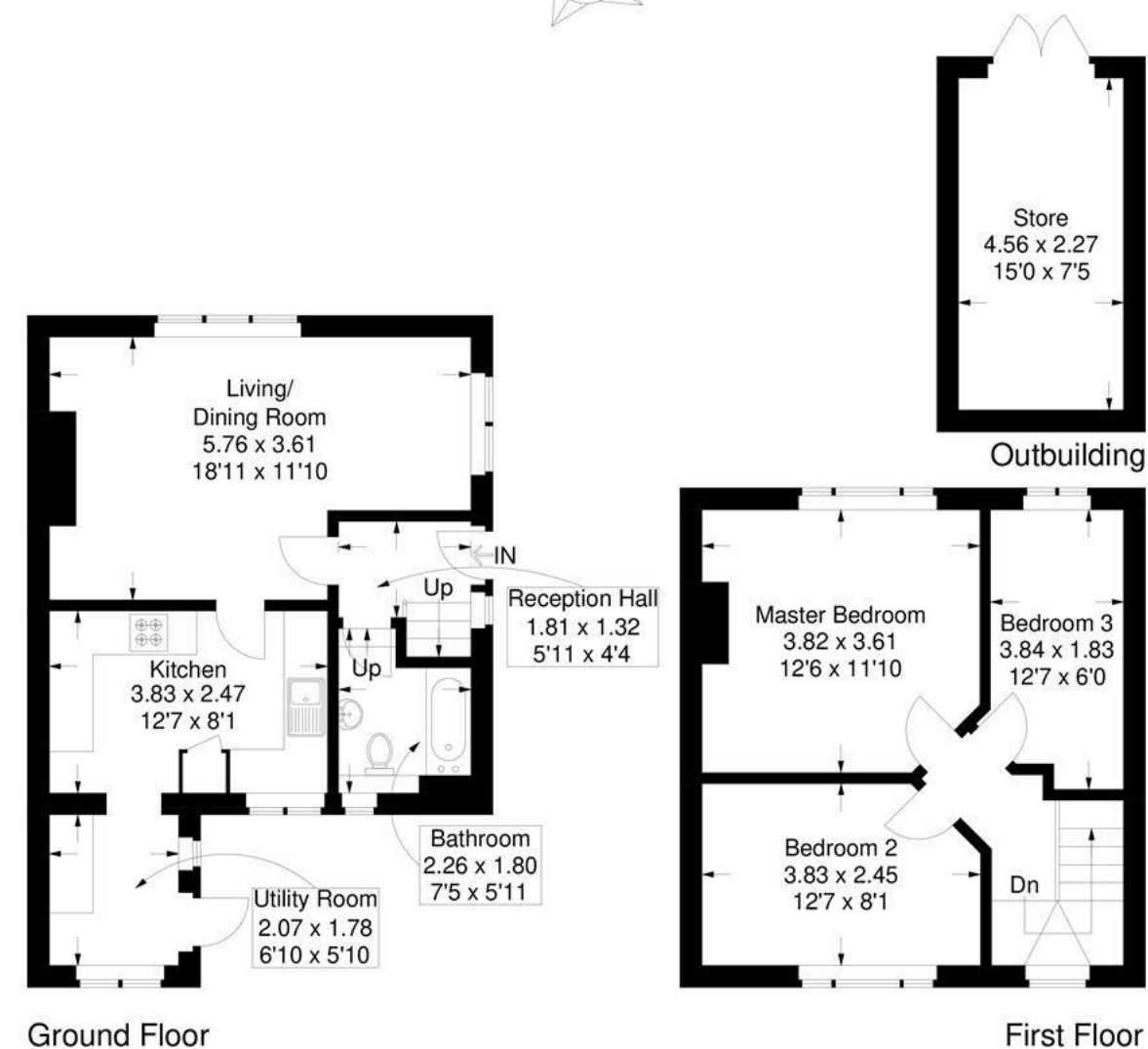


Whitstable Road, Cosham

Approximate Gross Internal Area = 77.2 sq m / 830 sq ft

Outbuilding = 10.6 sq m / 114 sq ft

Total = 87.8 sq m / 944 sq ft



This plan is for layout guidance only. Not drawn to scale unless stated. Windows and door openings are approximate. Whilst every care is taken in the preparation of this plan, please check all dimensions, shapes and compass bearings before making any decisions reliant upon them.

Energy Efficiency Rating		
	Current	Potential
Very energy efficient - lower running costs		
(92 plus) A		
(81-91) B		85
(69-80) C	70	
(55-68) D		
(39-54) E		
(21-38) F		
(1-20) G		
Not energy efficient - higher running costs		
England & Wales		EU Directive 2002/91/EC



PROPERTY DISCRIPTION

Nestled on the charming Whitstable Road in Cosham, Portsmouth, this delightful end terrace house offers a perfect blend of comfort and convenience

HALLWAY

LOUNGE DINER

KITCHEN

REAR LOBBY

BATHROOM

LANDING

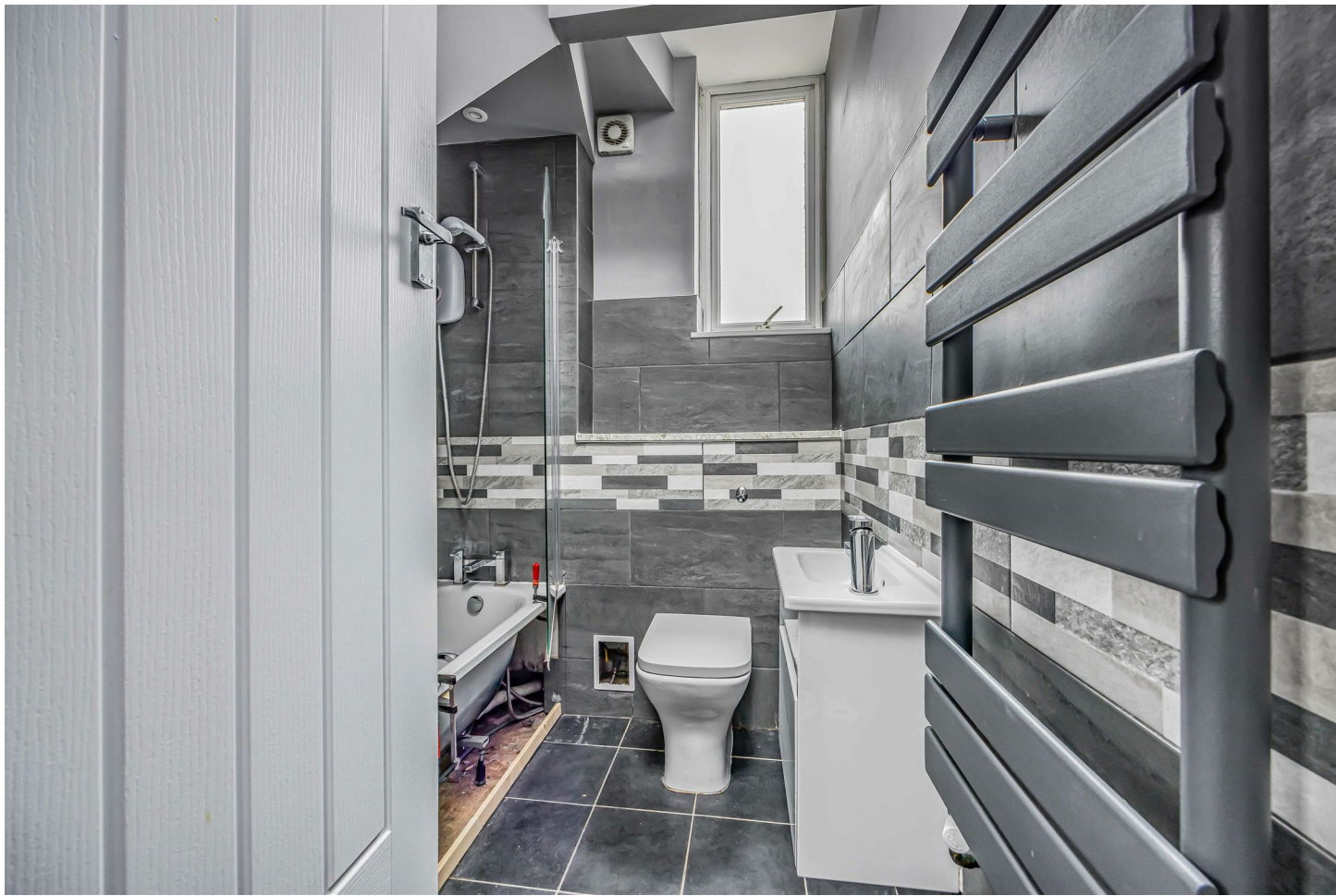
BEDROOM1

BEDROOM 2

BEDROOM 3

REAR GARDEN





FEATURES

- SEMI DETACHED
- THREE BEDROOMS
- LOUNGE DINER
- KITCHEN
- BATHROOM
- GAS HEATING
- DOUBLE GLAZING
- NO FORWARD CHAIN
- GREAT INVESTMENT CLOSE TO QA HOSPITAL